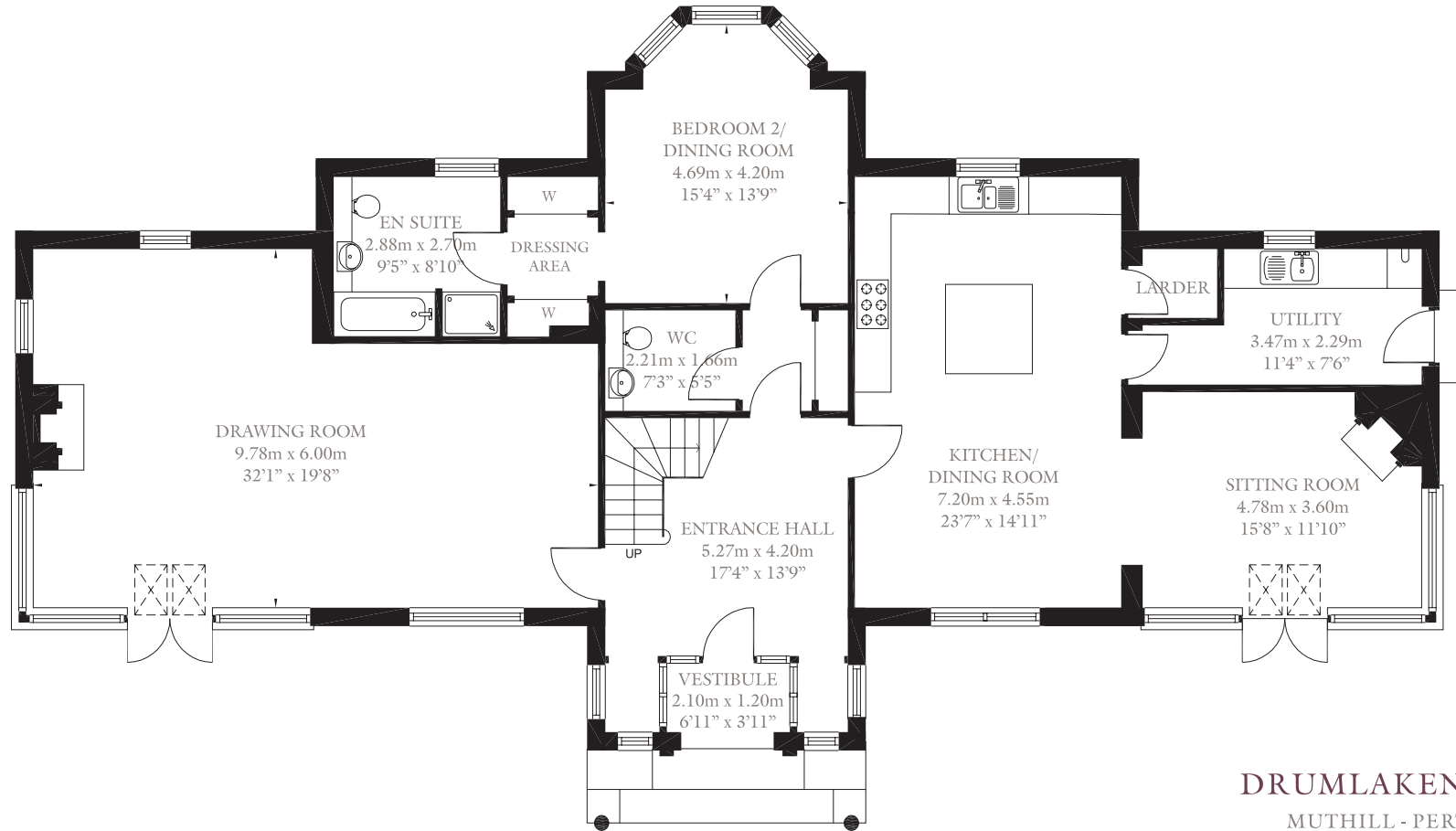
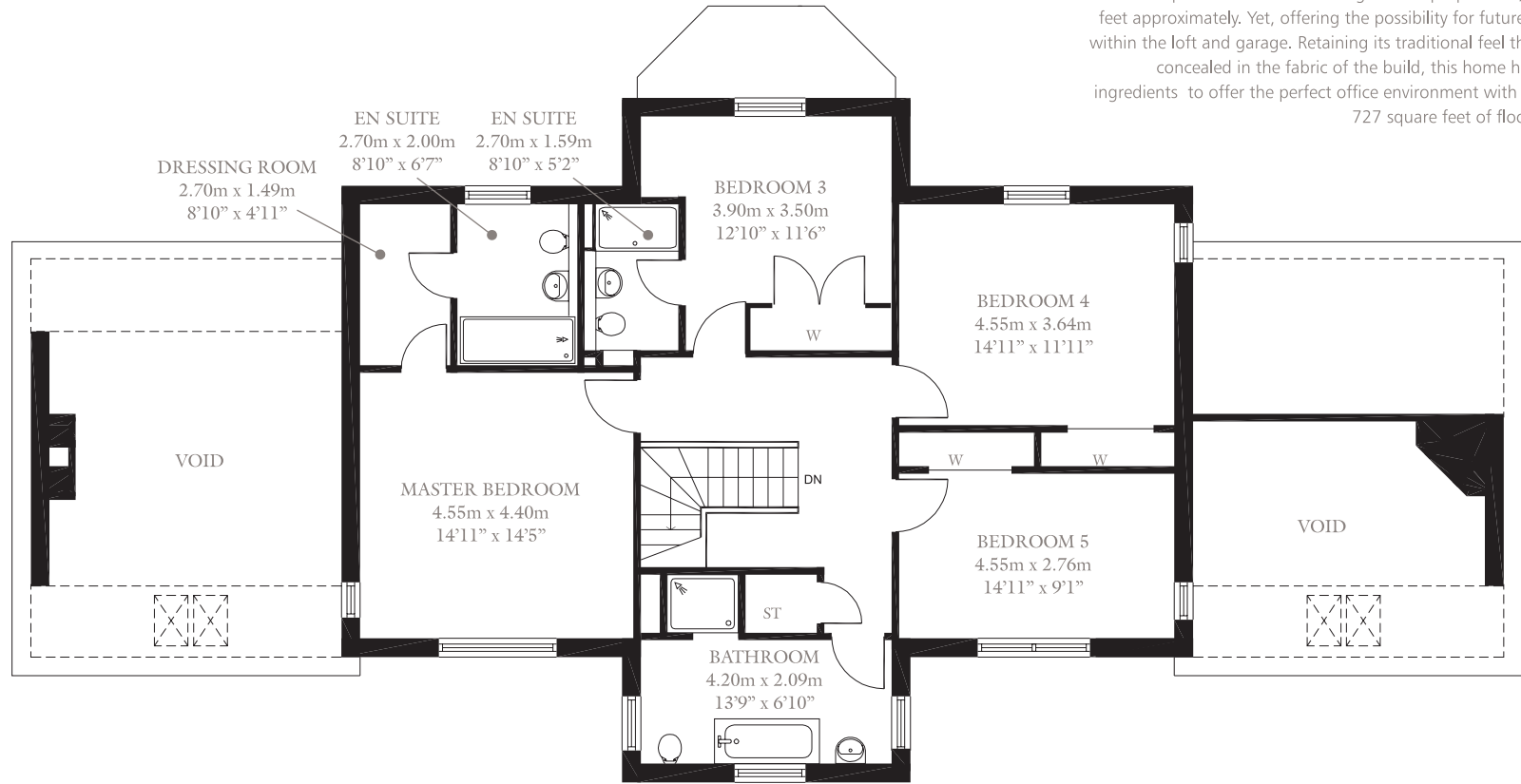


GROUND FLOOR PLAN



DRUMLAKEN PARK
MUTHILL - PERTHSHIRE

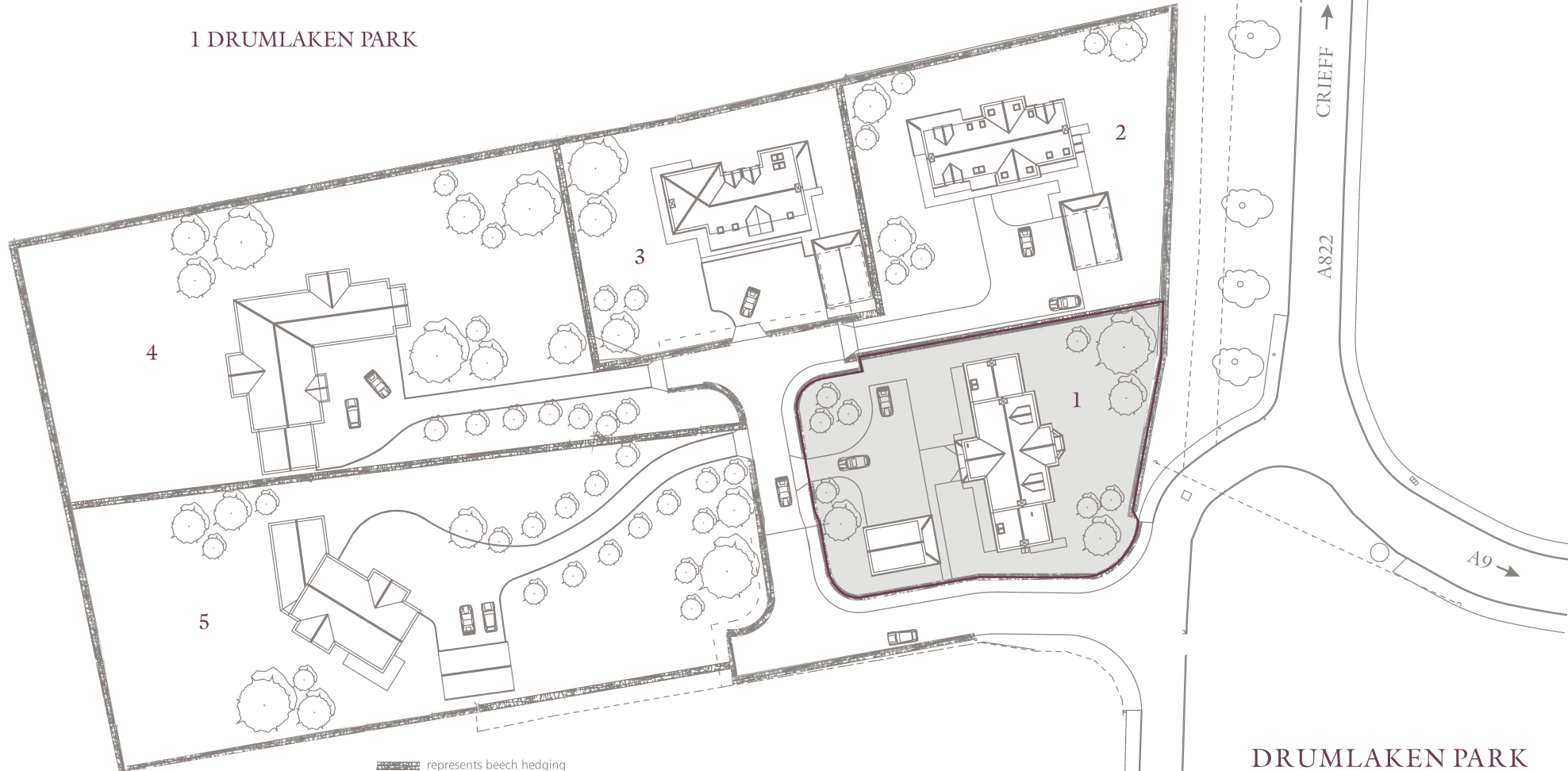
FIRST FLOOR PLAN



Number 1 Drumlaken Park has been duly deliberated between designer and developer to create a home of generous proportions, 3,100 square feet approximately. Yet, offering the possibility for future development within the loft and garage. Retaining its traditional feel though expertly concealed in the fabric of the build, this home has all the right ingredients to offer the perfect office environment with approximately 727 square feet of floored loft space

DRUMLAKEN PARK
MUTHILL - PERTSHIRE

1 DRUMLAKEN PARK



 represents beech hedging

DRUMLAKEN PARK
MUTHILL - PERTSHIRE